

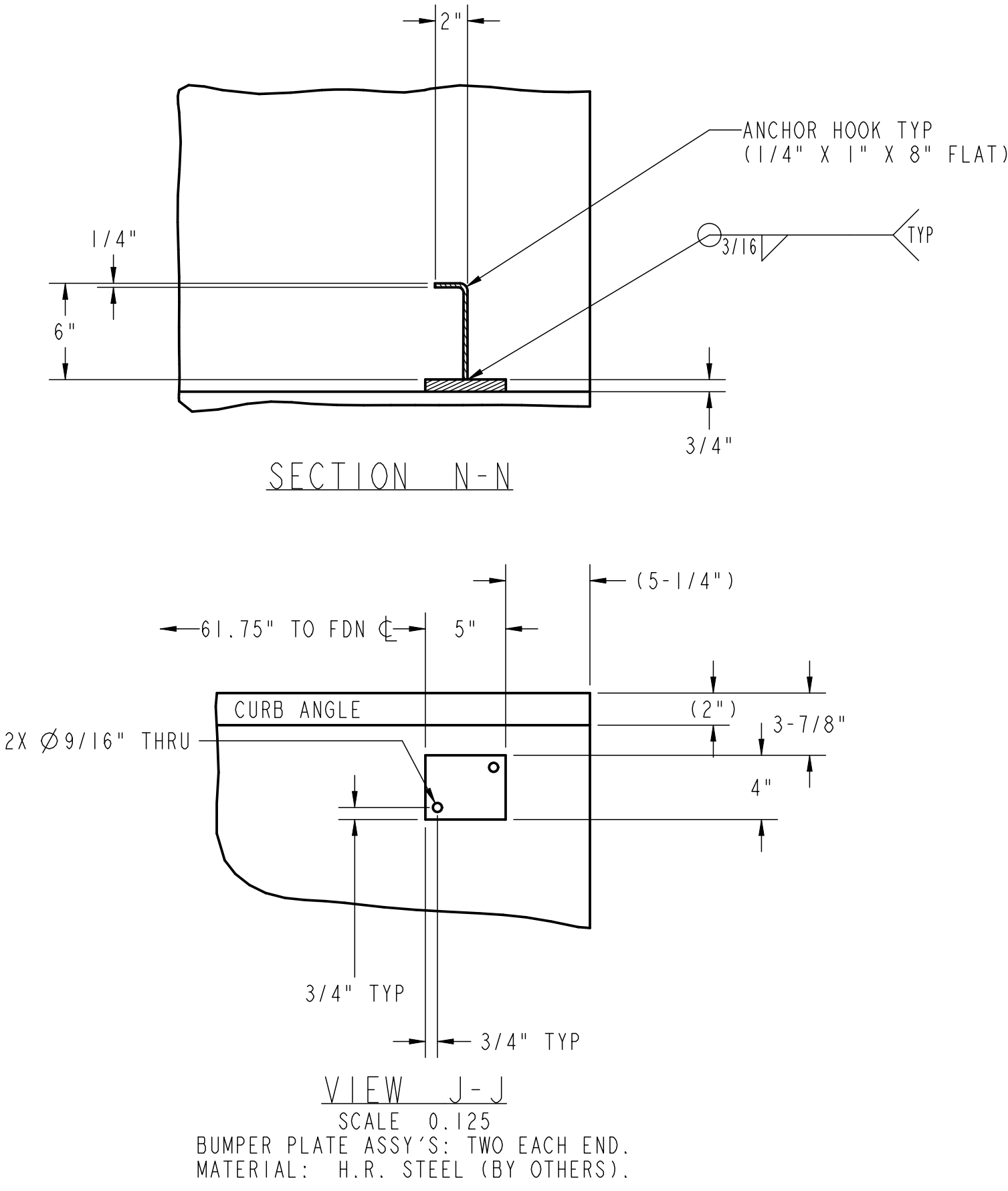
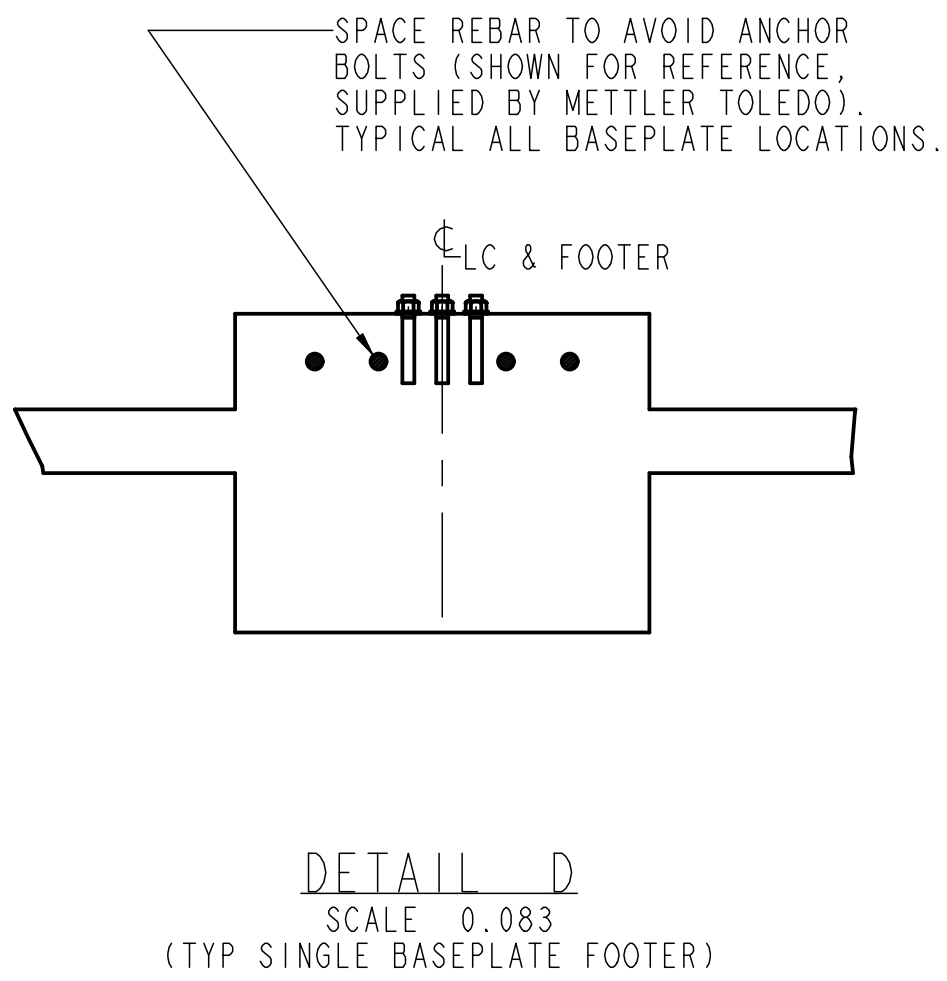
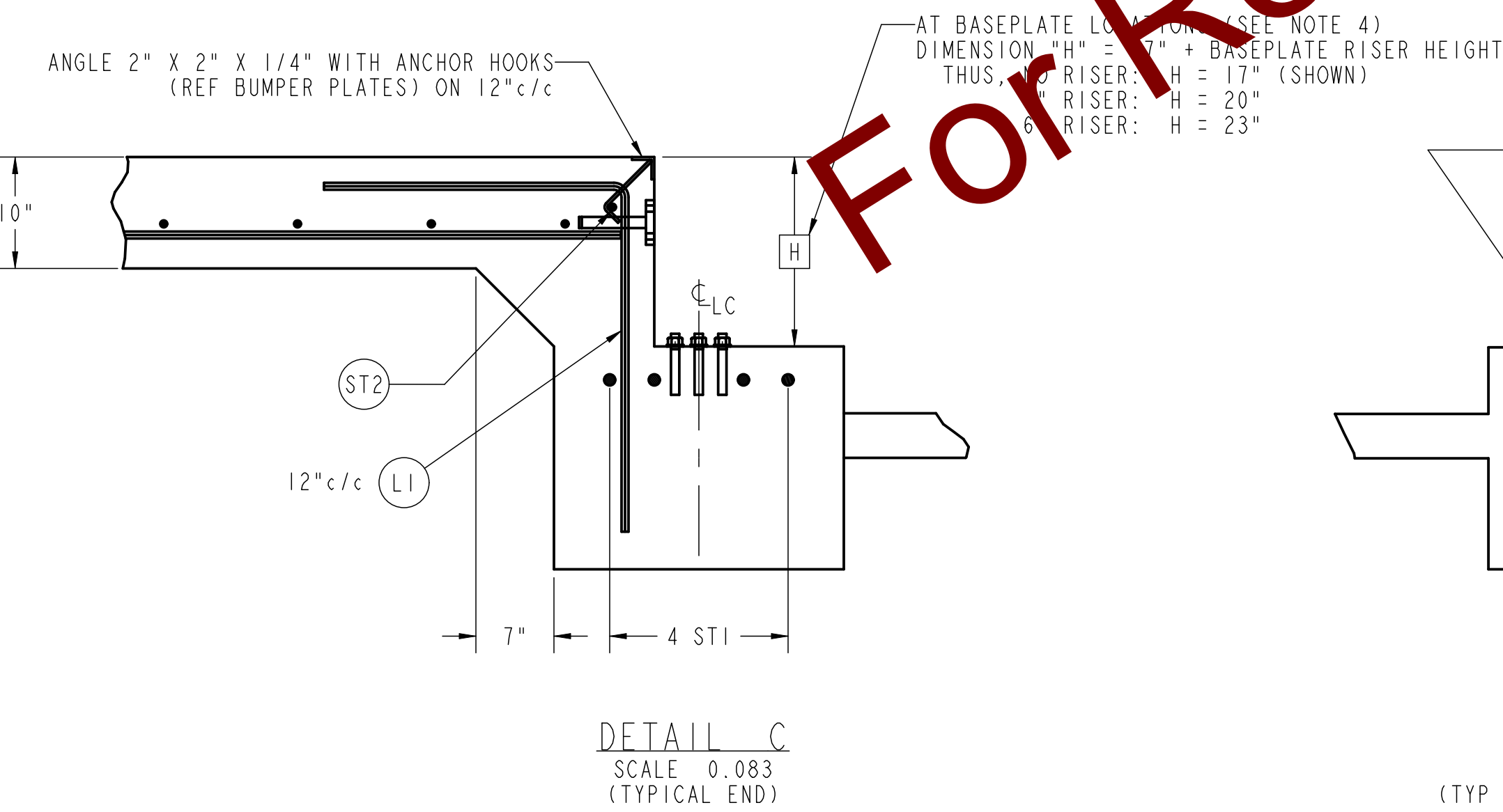
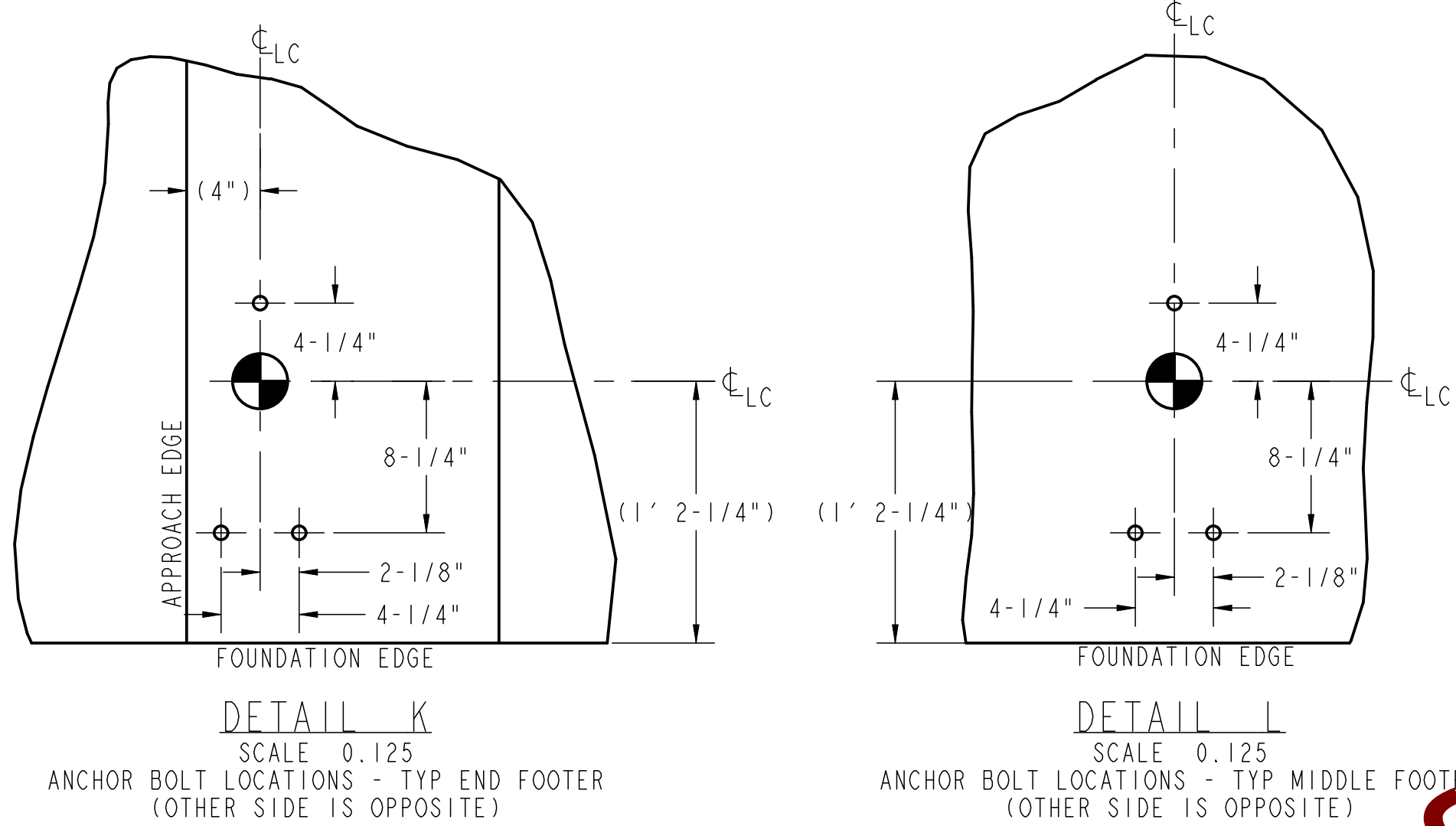
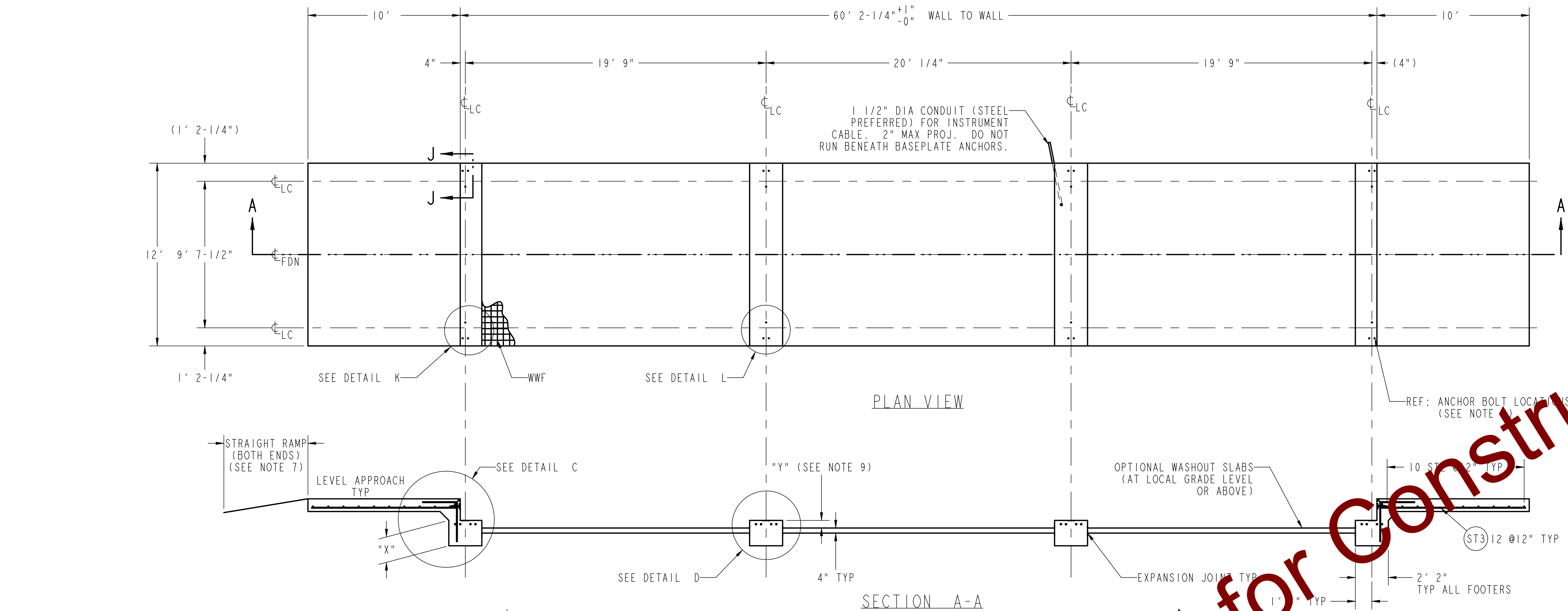
REINFORCING STEEL SCHEDULE (A.S.T.M. A-615 GRADE 60)						
COLD FORM BARS TO INSIDE DIMENSIONS			A B			
SYM	QTY	SIZE	LOCATION, DIRECTION	A	B	WGT
ST1	16	#8	FOOTERS, LATERAL	138.00		491
ST2	2	#5	ENDS, LATERAL	138.00		24
ST2	20	#5	APPROACHES, LATERAL	138.00		239
ST3	24	#5	APPROACHES, LONG.	114.00		237
L1	22	#5	APPROACH TO END TIES	26.00	30.00	107

L1 GIVEN WITH NO RISER BASEPLATES. DIMENSION "B" WILL VARY WITH THE ACTUAL HEIGHT OF RISERS USED, AS FOLLOWS:

NO RISERS	"B"
3" RISERS	30"
6" RISERS	33"
	36"

MATERIAL SUMMARY * (INCLUDES FOOTERS & APPROACHES) (ASSUMES NO RISERS)	FOOTER DEPTH: "X" INCHES (20 INCH MINIMUM)				
	20	32	44	56	68
CONCRETE (CU. YDS.)	14.5	18.5	22.5	26	30
REINFORCING STEEL (LBS)	1098				

* IF OPTIONAL WASHOUT SLABS ARE USED, ADD
650 SQ. FT. OF WWF: 6x6-W1.4xW1.4
8 CU. YD. CONCRETE



- NOTES:
- 1) USE MINIMUM 3000 PSI STRENGTH CONCRETE AT 28 DAYS WITH 5-7% AIR ENTRAINMENT.
 - 2) USE MINIMUM 60KSI YIELD DEFORMED REINFORCING STEEL. REBAR MINIMUM DEPTH OF COVER SHOULD BE IN ACCORDANCE WITH THE LATEST ACI BUILDING CODE REQUIREMENTS FOR STRUCTURAL CONCRETE (ACI 318-SECTION 7.7), UNLESS OTHERWISE SPECIFIED.
 - 3) FOUNDATION REQUIRES 2500 PSF RATED SOIL.
 - 4) TOP OF CONCRETE AT BASEPLATE LOCATIONS TO BE LEVEL AND IN ONE PLANE $\pm 1/8"$.
 - 5) IMPORTANT: DIAGONAL MEASUREMENTS ENDWALL TO ENDWALL MUST BE EQUAL WITHIN $1/2"$.
 - 6) BASEPLATE ANCHORS SUPPLIED BY METTLER TOLEDO. USE BASEPLATES AS TEMPLATES TO LOCATE ANCHORS DURING SCALE INSTALLATION.
 - 7) RAMP LENGTH: -PER LOCAL REGULATIONS
-1/2" SLOPE PER FOOT TYPICAL
 - 8) BOTTOM OF FOOTERS MUST BE BELOW LOCAL FROSTLINE.
 - 9) FOOTER HEIGHT "Y" CAN BE VARIED TO SUIT LOCAL CLEARANCE REQUIREMENTS. TOP OF FOOTER AT GRADE LEVEL (I.E. FLUSH WITH WASHOUT SLABS) PROVIDES STANDARD 5-1/2" CLEARANCE BETWEEN BOTTOM OF WEIGHBRIDGE AND WASHOUT SLABS.
 - 10) OPTIONAL: 6" OF GRAVEL MAY BE USED UNDER APPROACHES TO IMPROVE DRAINAGE. REFER TO LOCAL BUILDING CODES FOR BASE REQUIREMENTS.
 - 11) CONTRACTOR SUPPLIES:
 - EXCAVATION
 - REINFORCING STEEL
 - CURB ANGLE ASSEMBLIES (DETAIL C)
 - BUMPER PLATE ASSEMBLIES (VIEWS J-J & N-N)
 - CONCRETE AND FORMS
 - 1 1/2" DIA CONDUIT (STEEL PREFERRED)

REV	CHANGE	BY	DATE	SCALE 0.020	DATE 10/12/10	METTLER TOLEDO
A	DRAWING NUMBER WASTC207940	JSM	01/29/13			
B	DIM CONVERSION INCHES TO FEET	NLD	05/03/17	DRN JLB APPD ADF		
TITLE VTS10X FOUNDATION, VARIABLE FOOTER, 60' X 11', WITH RISER OPTIONS						
UNLESS OTHERWISE SPECIFIED, ALL DIMENSIONS ARE IN INCHES, AND DIMENSIONAL TOLERANCES ARE: FRACTIONAL DECIMAL ANGULAR $\pm 1/16$ $\pm .01$ $\pm 1^\circ$ $\pm .005$ $\pm .02$ $\pm .5^\circ$						
THIS PRINT IS FURNISHED WITH THE UNDERSTANDING THAT THE ESSENCE THEREOF WILL NOT BE REPRODUCED IN WHOLE OR IN PART WITHOUT WRITTEN AUTHORIZATION OF METTLER-TOLEDO, LLC. ALL DESIGNS ARE THE PROPERTY OF METTLER-TOLEDO, LLC. AND WILL BE PROTECTED BY PATENTS.						
61806033						REV